

February
2014

LISEFCU MONTHLY NEWS

Long Island Sounds



*Serving Long Island
State Employees and
Their Families Since 1938*

MISSION STATEMENT

The mission of the Long Island State Employees Federal Credit Union is to provide a wide range of quality financial services based on the needs of our members, while maintaining the safety and soundness of the Credit Union.

Board of Directors

Larry Malsam
President

Robert Hug
Vice President

Richard Causin
Treasurer

Thomas Oelerich
Director

Margaret Conklin
Director

Michael Maryea
Director

Ian Francis
Director

Credit Committee

Kent Edwards
Chair

Don Jayamaha

Carol Marchesi

Janet Mahoney

Michael Maryea

Supervisory Committee

Karen Taylor
Chair

Florence Mansuetta

Linda Imbriano

Rosemarie Saladino

Priscilla Ortiz

Office Staff

Joyce Miller
Manager

Sanaz Gorjizadeh
*Loan Officer/
Marketing Director*

Kathy Zwirblis
Collections

Stephine Pisano
*Member Services
Representative*

Amelia Kelly
Teller

Manager's Message

As part of our continuing efforts to improve communication with our members, we've made enhancements to our monthly newsletter. Starting with the February issue we will spotlight some of the people who are here every day in the Credit Union and others who are working behind the scenes. They may be an employee, member of the Board, or a Committee member. We hope this will provide you with a "face to go with the name". We here at Long Island State Employees Federal Credit Union strive to add more of that personal touch our members have come to value.

Be sure to check out this newsletter every month for news and special loan promotions we provide throughout the year. We value your membership and look forward to growing with you in the future.

Joyce Miller
Manager

SPECIAL PROMOTION

It is Tax time again!

LISEFCU wants to help make your tax worries go away.

We have a special loan to reduce the burden. For more information or to apply for the tax loan call us at 631-291-9166, or stop by our office, Suite 5A9 and speak with Sanaz Gorjizadeh.

Tax Loan Terms: 12 months, \$2000 max.

Fixed rates as low as 8.99%

* Credit extension and approval based upon the applicant's credit history, payment history and ability to repay the credit extended*.

*Tax Time
Can Be
Stressful!*



Make Your Valentine Happy!

Buy one of our Visa Gift Cards to guarantee your gift is liked!



AUTO

New

Rates as low as 2.99%*
for up to 72 months*

Used

Rates as low as 3.49%*
for up to 60 months*

For more information call Sanaz Gorjizadeh at 631-291-9166

HOME

Are you planning a wedding?

Are you paying for college?

Is there a home improvement you've been putting off?

Have you been dreaming of a fabulous vacation ?

If so then YES, NOW is the TIME for a Home Equity Loan!

Enjoy a fixed interest rate*

Choose your loan amount from \$30,000 to \$150,000

Choose your term (5 to 15 years)

There are No Closing Fees**

**Exception Sales Tax

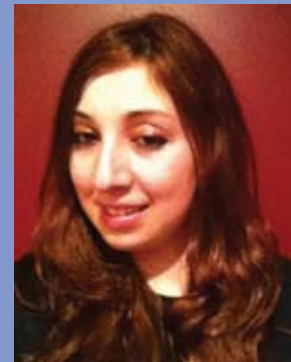


For more information
call Sanaz Gorjizadeh at 631-291-9166

*Use the Equity in
Your Home to Make Your
Dreams Come True!*

Members Helping Members Since 1938

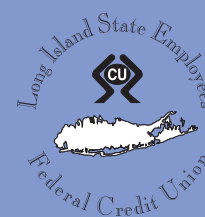
Know Your Credit Union Staff



Those who are regulars are surely familiar with Stephine's smiley face! She started with LISEFCU in Aug 2011 as a part time Teller and was promoted to Head Teller/Member Service Rep shortly after. Stephine is a hardworking, friendly and diligent employee and is recognized by other staff and members for her excellent customer service skills. She is currently doing her BA in Math and enjoys spending time with family and friends. Stephine is always ready to go the extra mile to help the members and other employees.

Holiday Closings:

President's Day
Monday, February 17



Long Island State Employees FCU

250 Veterans Highway
Hauppauge, NY 11788

TOLL FREE:
1 877 LISEFCU

Telephone: (631) 291-9160

Fax: (631) 360-3620

Audio Response: (631) 952-6286

To report lost or stolen
debit cards: 1 800-453-4270



www.lisefcu.org